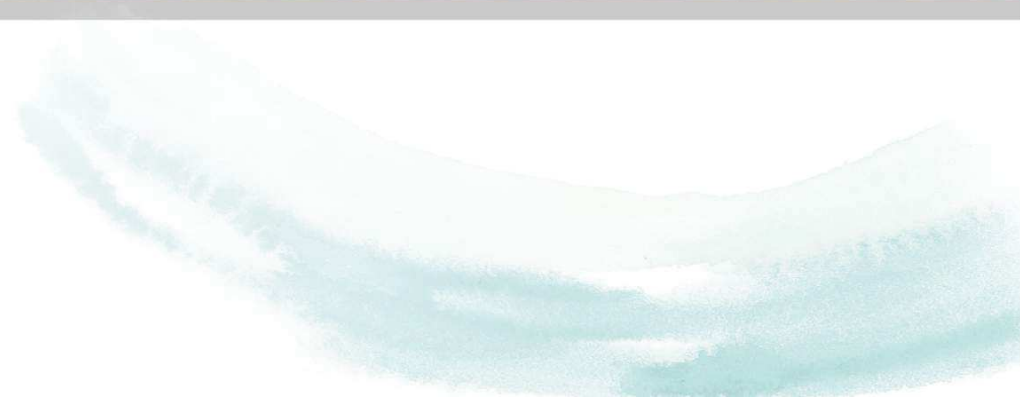




Portable Air Conditioning



Key Features

Design

Appearance

Innovative & Compact Design

Display

LED Display

Control

Ergonomic design of control panel (right hand operation habit)

Smart

Air Flow

Cool down the room quickly with auto-swing function

Air Outlet

The air outlet can open and close automatically when switch on/off

Self-Diagnosis

Show the error code when the unit has a malfunction

24h Timer

Switch on/off the unit whenever you want

Friendly

Draining

Two drain ports, both auto-draining and manual draining is available

Universal Wheels

The unit can be moved wherever that you want easily

Controller Bracket

Special design to hold the remote controller, avoid missing the controller

Power Cable Holder

Hold the power cable, avoid any accident

Performance

Multi-Function

Can be used as AC/Fan/Dehumidifier in you home or office

Strong Performance

Strong cooling capacity
Strong airflow (350m³/hr, 9k model)

Low Noise

48dB(A) at low fan speed

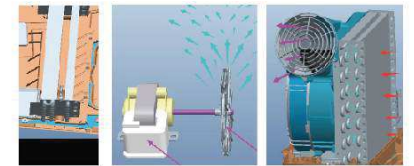
Profile



Patent Technology

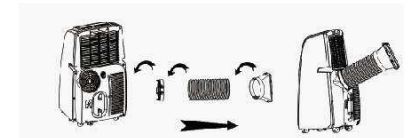
Condensate Water Self-Evaporating Technology.

There is a paddle between the condenser and evaporator, which hit the water in the chassis, splattering against the condenser, the small water-drop evaporate at the hot surface of the condenser, and goes out together with the airflow. It makes the condensing of the AC more efficient, save energy.



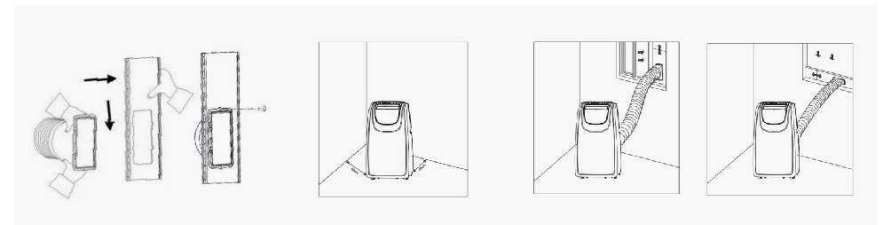
Assembly

- 1 Put the round connector onto exhaust outlet on the back side of the unit.
- 2 Install exhaust hose (1.5m) onto round connector.
- 3 Put window plate adapter onto the other end of exhaust hose.



Installation

- 1 Connect adapter onto window plate and fix by screw.
- 2 Move the unit together with its exhaust hose assembly near the window. Keep unit at least 50cm away from the walls and other objects.
- 3 Install adapter into window plate and extend exhaust hose



* Note: 1. Please do not use prolonged the hose or other different hose. 2. The exhaust hose must be smooth without any obstruct.

Draining

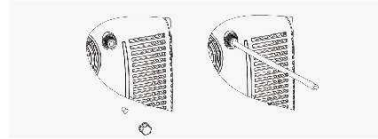
Two Draining Methods

This unit has a built-in water tank on the chassis and two drain ports. Manual and continuous draining are available.



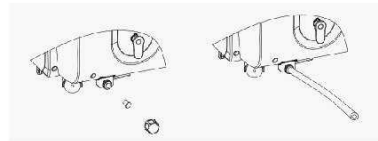
1 Manual Draining (Upper Port)

When the condensate water reached alarm level on chassis, warning sounds and unit stop working, the unit will restart after manual draining.



2 Continuous Draining (Both Ports)

- Both ports can be available, and bottom drain port is preferable.
- Unscrew the drain cover, plug off and connect the drain hose to the drain port for continuous draining.



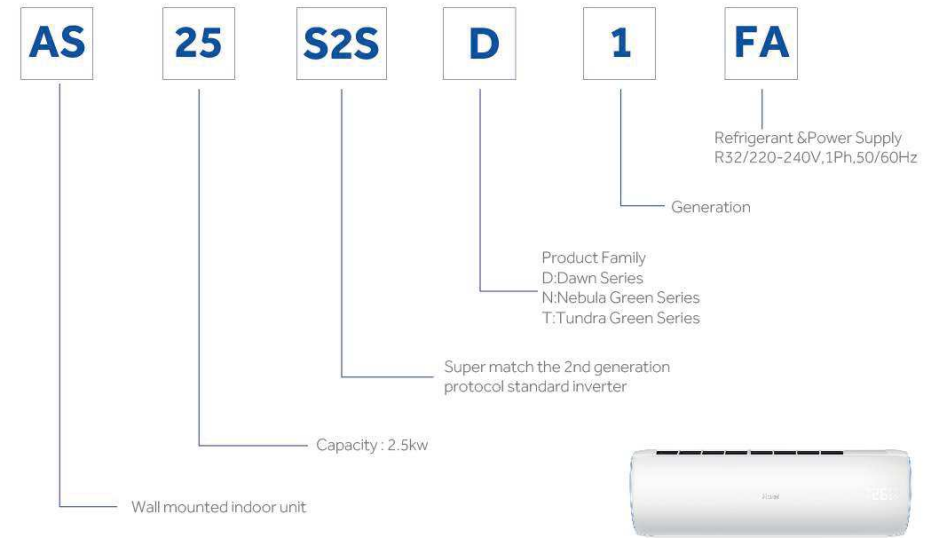
Specifications

Model		Unit	AM09AN1LAA	AM09AN1HAA	AM09AN1HAA	AM09AN1EAA
Cooling capacity	Btu/h		9000	9000	12000	12000
	W		2640	2640	3520	3520
Heating capacity	Btu/h		N/A	10000	N/A	13000
	W		N/A	2930	N/A	3800
Power Supply	V-Hz,Ph		220 ~ 240,50,1	220 ~ 240,50,1	220 ~ 240,50,1	220 ~ 240,50,1
Rated Input	Cooling	W	1010	1010	1350	1350
Rated Current	Cooling	A	4.8	4.8	6.4	6.4
Rated Input	Heating	W	N/A	1060	N/A	1400
Rated Current	Heating	A	N/A	5.0	N/A	6.6
EER for Cooling(R-410A)	Btu/W/h		8.91	8.91	8.90	8.90
	W/W		2.61	2.61	2.61	2.61
COP for Heating(R-410A)	Btu/W/h		N/A	9.43	N/A	9.26
	W/W		N/A	2.76	N/A	2.71
Energy Class (EER/COP)	/		A/-	A/-	A/-	A/-
Moisture Removal	L/h		1	1	1.4	1.4
Air Circulation	m³/h		350	350	400	400
Noise	High	dB(A)	53	53	54	54
	Mid	dB(A)	51	51	52	52
	Low	dB(A)	48	48	49	49
Body Size	W×H×D	mm	428×742×383	428×742×383	428×742×383	428×742×383
Package Size	W×H×D	mm	488×876×420	488×876×420	488×876×420	488×876×420
Net Weight/Gross Weight	kg		30.5/34.3	30.7/34.5	31.5/35.3	31.7/35.7
Appliation Area	m²		15 ~ 20	15 ~ 20	20 ~ 25	20 ~ 25
Loading Quantity	Set/40 ⁸ HQ		394	394	394	394
	Set/40 ⁸ GQ		264	264	264	264
	Set/20 ⁸		132	132	132	132

* Remarks:1 The above technical data are for reference only. Haier reserves the right to modify them without notice.

Nomenclature

Indoor Unit



Outdoor Unit

